



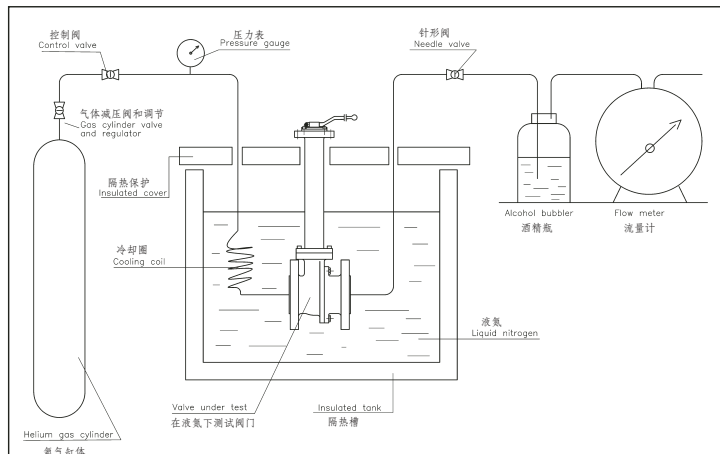
### 结构特点 / Construction

- 全径/Full bore
- 分体式/Split body
- 双向流/Bidirectional
- 防静电/Antistatic stem
- 防火安全 /Fire safe
- 除油脂 / Degreased
- 软&硬密封 /Soft & metal seat
- 填料免维护/Autoadjustable packing
- 防吹出阀杆/Anti blow out stem
- 阀腔自泄压/Self cavity pressure relief
- 弹簧加载阀座/Spring loaded seat
- 使用温度-196°/Service Temp. -196°



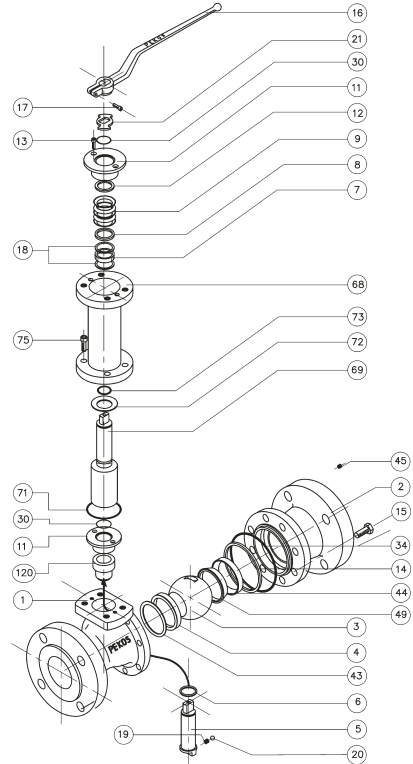
按BS6364标准  
通过劳氏船级社认证

**Certified by Lloyd's  
Register as per  
BS 6364**

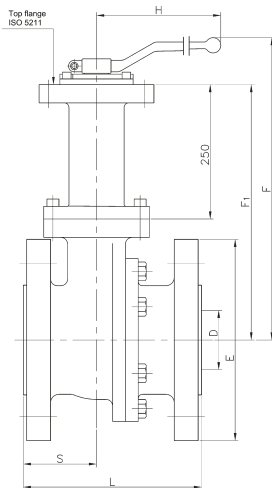


### 材料 / Materiales

ITEM	名称	DESCRIPTION	CAN.	MATERIALS (DIN)	MATERIALS (ANSI)
1	阀座 1	Body 1	1	1.4408	A351 CF 8M
2	阀座 2	Body 2	1	1.4408	A351 CF 8M
3	球体	Ball	1	1.4408	A351 CF 8M
4	阀座	Seat	1	KEL'F	KEL'F
5	阀杆	Stem	1	1.4401	AISI 316
6	阀杆密封圈	Stem Seal	1	PTFE+GF	PTFE+GF
7	填料	Packing ring	2	Graphite	Graphite
8	填料垫	Gland packing	1	1.4401	AISI 316
9	弹性垫圈	Spring washer	5	1.4310	AISI 301
11	阀盖	Cover	2	1.4408	AISI316
12	阀盖圈	Cover ring	2	Graphite	Graphite
13	阀盖螺栓	Cover bolt	4	A4-70	A4-70
14	阀体密封圈 1	Body seal 1	1	Graphite	Graphite
15	阀体螺栓	Body bolt	-	A4-70	B8M
16	手柄	Handle	1	Stainless steel	Stainless steel
17	手柄螺栓	Handle bolt	1	8.8	8.8
18	止推垫	Thrust washer	1+1	PTFE+CG	PTFE+CG
19	弹簧	Spring	1	1.4319	AISI 302
20	球	Ball	1	1.4401	AISI 316
21	止推圈	Stop washer	1	1.0503	1045
30	金属圈	Metalic ring	2	AISI 302	AISI 302
34	阀体密封圈 2	Body seal 2	1	-	Graphite
43	阀座密封圈	Seat seal	1	Graphite	Graphite
44	座圈	Ring seat	1	1.4401	AISI 316
45	弹簧座	Spring seat	-	Inconel X750	Inconel X750
49	楔形阀座	Conical seat	1	KEL'F	KEL'F
68	加长阀盖	Extension	1	1.4401	AISI 316
69	加长阀杆	Extended stem	1	1.4401	AISI 316
71	加长阀杆密封圈	Extended seal	1	Graphite	Graphite
72	阀杆密封圈	Stem seal	1	PTFE+GF	PTFE+GF
73	阀杆O形圈	Oring stem	1	Nitrile	Nitrile
75	加长阀盖螺栓	Extention bolt	4	A4-70	A4-70
120	填料 2	Packing ring 2	1	Graphite	Graphite



### 结构尺寸 / Dimensions



#### DIN

D = DN	15	20	25	32	40	50	65	80	100	150	200	250	300
H	185	185	185	185	293	293	350	350	350	-	-	-	-
F	350	352	360	365	380	387	400	437	451	-	-	-	-
F1	PN16 PN40	-	-	-	-	-	-	-	-	425	495	566	630
E	PN16 PN40	95	105	115	140	150	165	185	200	220 235	285 300	340 375	405 450
L	F1 F4 F5	130 115	150 120	160 125	180 130	200 140	230 150	290 170	310 180	350 190	-	-	-
S	PN16 PN40	47	49	55	52	53	63	76	81	91	165 175	200	225
ISO 5211	F05	F05	F05	F05	F07	F07	F07	F10	F10	F12	F14	F16	F25

#### ANSI

DN	1/2"	3/4"	1"	1 1/2"	2"	3"	4"	6"	8"	10"	12"
D	15	20	20	40	50	80	100	150	200	250	300
H	185	185	185	293	293	350	350	-	-	-	-
F	350	352	360	380	387	437	451	-	-	-	-
F1	150lbs 300lbs	-	-	-	-	-	-	425	495	566	630
E	150lbs 300lbs	89	99	108	127	152	191	229	279	343	406
L	150lbs 300lbs	108	117	127	165	178	203	229	394	457	533
S	150lbs 300lbs	47	52	56	77	92	100	114	165	228	284
ISO 5211	F05	F05	F05	F07	F07	F10	F10	F12	F14	F16	F25

### 开关扭矩 / Breakway torques\*

DN	1/2"	3/4"	1"	1 1/2"	2"	2 1/2"	3"	4"	6"	8"	10"	12"
DIN	20	35	55	82	120	150	305	460	680	1100	1630	2360
ANSI 150	18	30	60	80	110	130	270	410	620	920	1420	2100
ANSI 300	28	48	90	115	165	195	405	610	920	1350	2110	3125

(\*) DIN: 扭矩值是在 -196°C, 压差为40 bar, 介质为氦气时的试验所得  
Breakaway torques at differential pressure of 40 bars with helium at -196°C  
(\*) ANSI: 扭矩值是在 -196°C, 压差为20 bar即150lbs和50 bar即300lbs, 介质为氦气时的试验所得 / Breakaway torques at differential pressure of 20 bars for 150 lbs and 50 bars for 300 lbs with helium at -196°C